

PART OF THE E.1/2, OF SEC. 2, T.7N., R.2E.;
AND PART OF THE S.1/2, OF SEC. 26, & PART OF SEC. 35, T.8N., R.2E., S.L.B. & M.

SUNRIDGE HIGHLANDS NO. 11

TAXING UNIT: 58

A CLUSTER SUMMER HOME SUBDIVISION

LOTS 247, 273-278

IN WEBER COUNTY

SCALE 1" = 100'

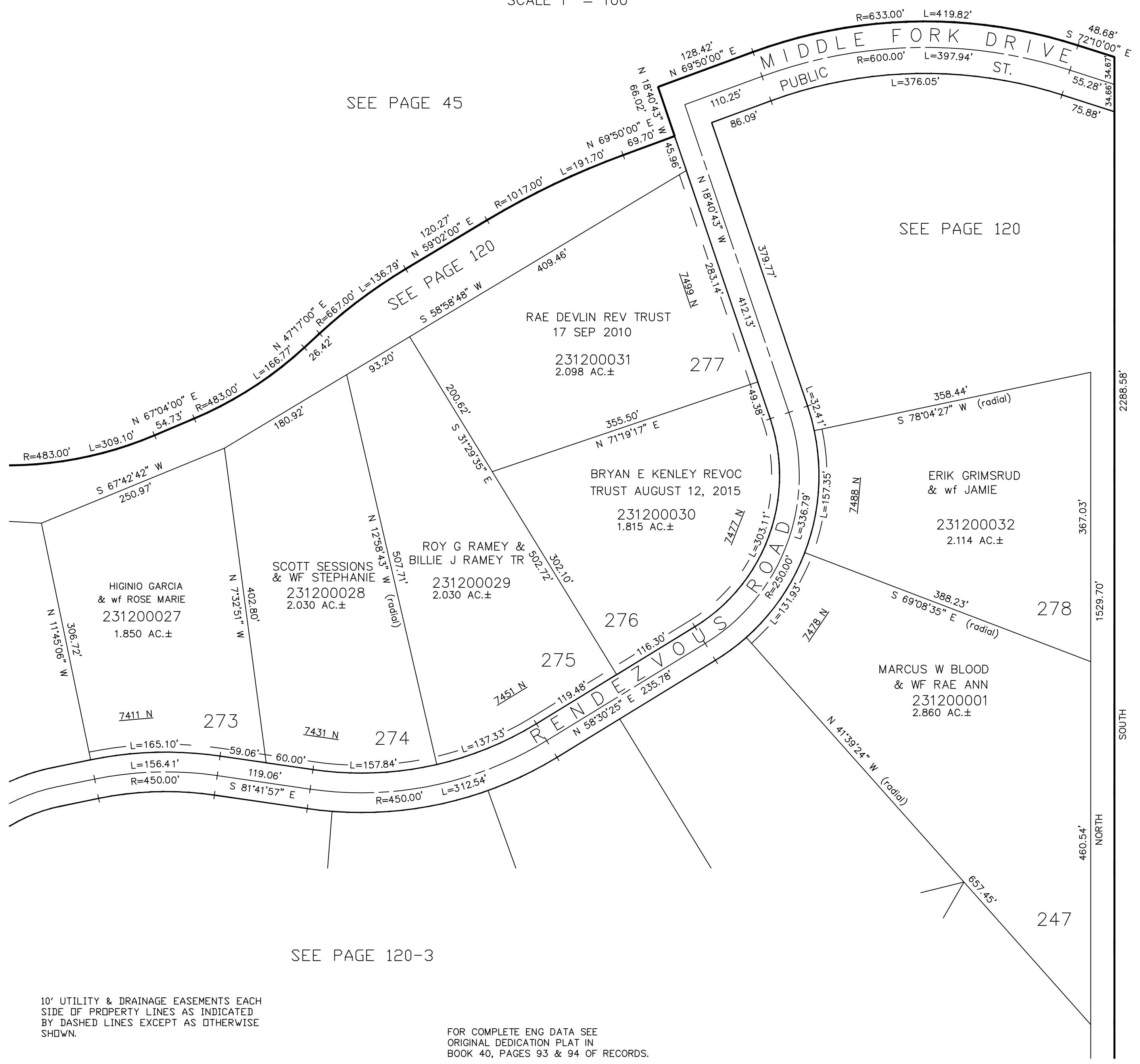
SEE PAGE 45

SEE PAGE 120

SEE PAGE 120

SEE PAGE 120-1

SEE PAGE 97



SEE PAGE 120-3

10' UTILITY & DRAINAGE EASEMENTS EACH
SIDE OF PROPERTY LINES AS INDICATED
BY DASHED LINES EXCEPT AS OTHERWISE
SHOWN.

FOR COMPLETE ENG DATA SEE
ORIGINAL DEDICATION PLAT IN
BOOK 40, PAGES 93 & 94 OF RECORDS.